



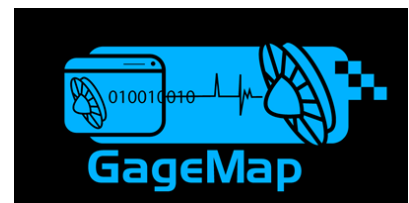
EDAS NEWS

www.edasinc.com

info@edasinc.com

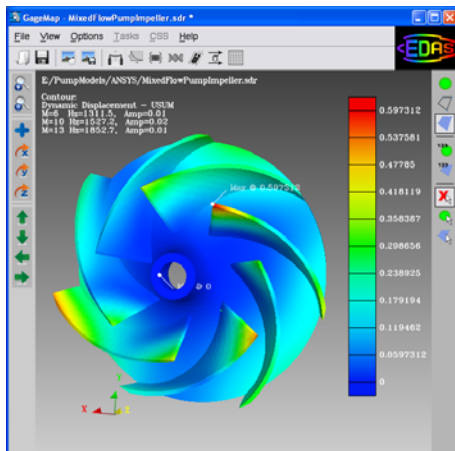
GageMap Software to be Used in the University of Virginia Rotating Machinery and Controls (ROMAC) Laboratory for Graduate Led Industry Research Spring Hill, TN

EDAS Inc. has provided use of GageMap software to the University of Virginia School of Engineering and Applied Science Rotating Machinery and Controls (ROMAC) Lab and has joined the ROMAC Consortium.



Paul Allaire, professor and director of ROMAC and Pradip Sheth, associate professor and director of RotorDynamics and Vibrations in ROMAC, are delighted with the partnership. “We are pleased to have access to this software. GageMap brings new capabilities to the ROMAC Lab that were not available to us in the past, Sheth said.”

GageMap will be utilized by ROMAC to conduct vibration analysis and simulate vibratory effects on industry focused research projects . GageMap is widely used in the Aerospace industry and will expose students to many useful technologies that will ultimately help them do their jobs, but will also spark their creative thought processes in how to apply new technologies to industry.” says Dr. Kurt Nichol, President/CEO of EDAS, Inc. “We’re looking forward to working with the students and getting their creative ideas for our product as well.”



the sensor coordinate system so comparison to test data is a breeze. GageMap

GageMap is a finite element post processing tool designed to dramatically reduce overall test preparation effort, cycle time and cost by verifying and utilizing finite element analysis results. GageMap also performs complex high cycle fatigue assessments and simplifies analysis of complex material systems. GageMap interfaces to popular, commercially available finite element packages and gives you the ability to apply strain gages and accelerometers to your finite element model independent of the mesh. Data is reported in

supports most finite element types, anisotropic material properties, grouping, custom coordinate systems, pre-stress and cyclic symmetry. Because GageMap is so user friendly, many customers use it instead of their FE post processor.

A licensed, professional engineering firm based in central Tennessee, EDAS is a provider of high-technology engineering services, dynamic data acquisition with real-time monitoring, data analysis and archival products that benefit our increasing customer base, world-wide. Certified to ISO 9001:2000 quality standards, EDAS is continually striving to bring the highest quality products to market.

Visit our web site at www.edasinc.com for more information about our products and services. You deserve to be impressedSM!

Contact Amanda Farmer 931-486-0081